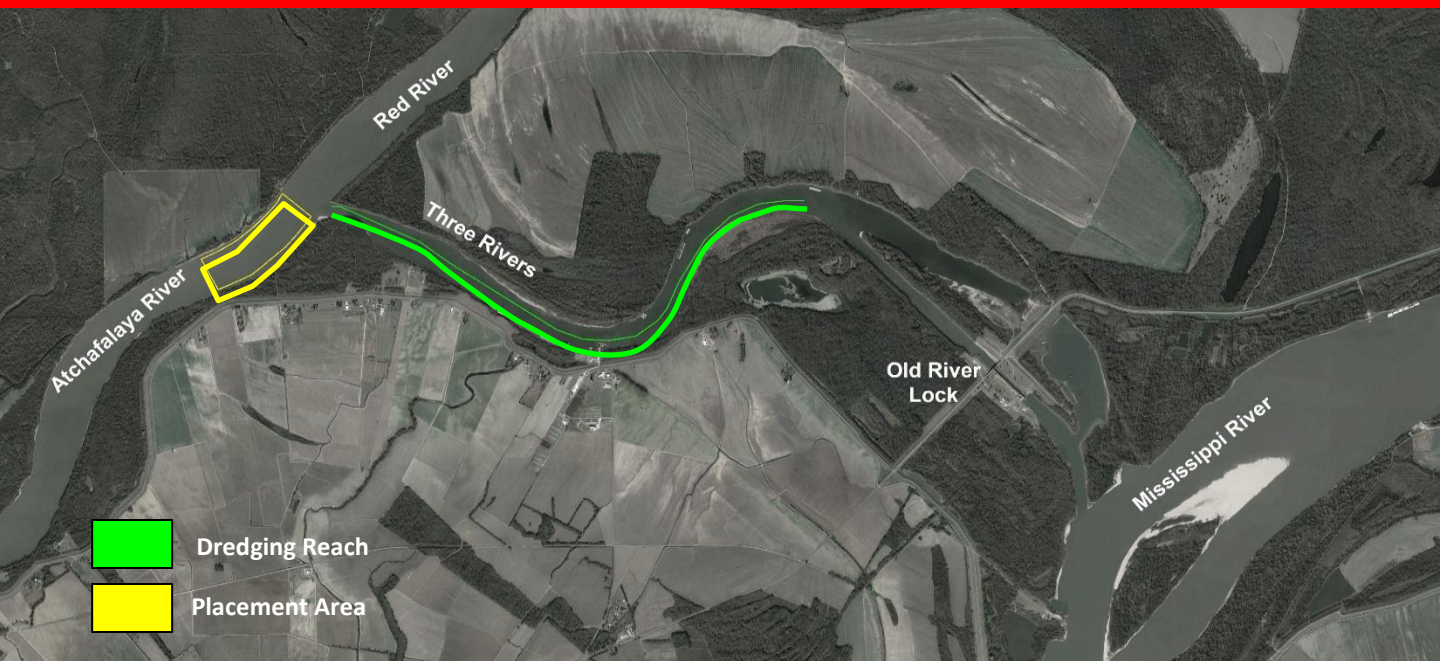


# ATCHAFALAYA BASIN THREE RIVERS



## FY 2023 MAINTENANCE DREDGING

**PROJECT:** Atchafalaya Basin  
**REACH:** Three Rivers  
**OPERATIONS MANAGER:** Tim Connell  
**PHONE:** (504) 862-2360  
**LOCAL SPONSOR:** U.S. Government

### DESCRIPTION OF WORK:

Maintain a 12' deep x 125' wide channel in Old River at its junction with the Atchafalaya River.

**HISTORICAL DREDGING FREQUENCY:** Annual

**LAST DREDGED:** 2021

**TYPE OF DREDGE:** Cutterhead

**ESTIMATED QUANTITY:** 120,000 CY

**ESTIMATED COST:** \$900,000

**ADVERTISE:** TBD

**OPEN BIDS:** Dependent on River Conditions

**AWARD:** TBD

**START WORK:** TBD

**DURATION:** 10 days

**DREDGING REACH:** Three Rivers

**DISPOSAL AREAS:** Atchafalaya River

**DISPOSAL TYPE:** Open Water (Dredged material discharged beyond the -15' depth contour)

**REMARKS:**

**SEDIMENT CHARACTERISTICS**

Sand: 12% Silt: 35% Clay: 53%

Fiscal Year	Contract No.	Disposal Area	Dredging Quantity (CY)
2001	01-C-0063	Atch River Open Water	115,002
2002	02-C0059	Atch River Open Water	81,402
2004	04-C-0052	Atch River Open Water	254,224
2005	05-C0052	Atch River Open Water	42,646
2007	06-C-0190	Atch River	50,000
	07-C-0083	Open Water	70,817
2009	08-C-0103	Atch River Open Water	27,171
2010	09-C-0121	Atch River Open Water	75,165
2011	10- C-0106	Atch River Open Water	123,314
2012-2013	12-D-0007 001	Atch River Open Water	173,079
2014	13-D-0010	Atch River Open Water	157,487
2016	15-D-0024	Atch River Open Water	131,211
2018	01-C-0016	Atch River Open Water	355,608
2019	07-D-0008	Atch River Open Water	45,608
2021	19-D-0012	Atch River Open Water	55,070